

PROPERTY IN THE BOROUGH OF TENAFLY, BERGEN COUNTY, NEW JERSEY

Location Survey of Dwelling on property known as Lot 16 in Block 303 as shown on a certain map entitled "Map of Property of Benjamin Broghers Inc. at Tenafly-Bergen Co. N.J." and filed in the Bergen County Clerk's Office on March 24, 1947 as Map No. 3524.

Certified to: ETHAN ABRAHAM, to be correct.

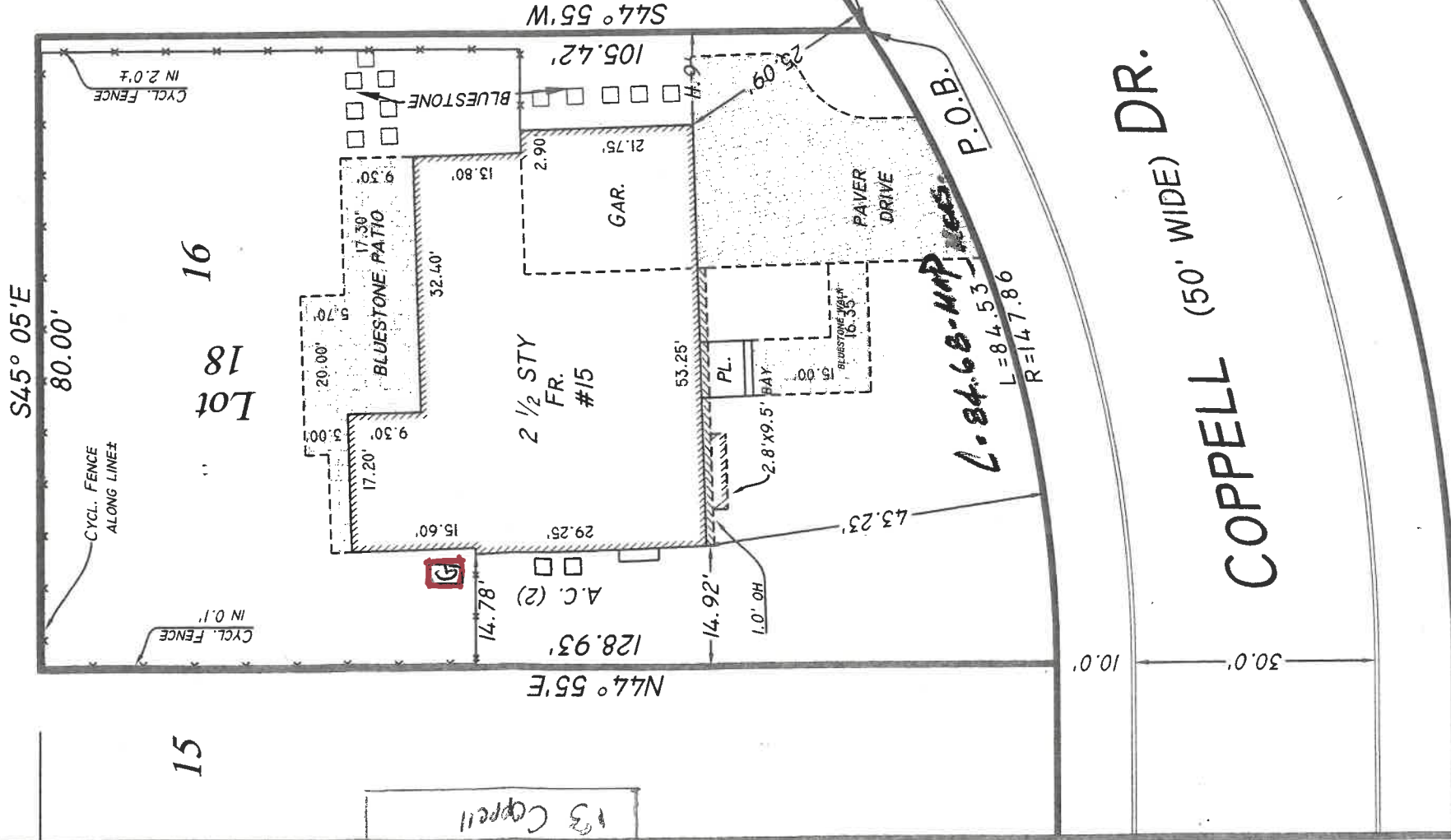
Scale: 1" = 20 feet

Being Lot 18 in Block 1809 on the Tax Map.

STEVEN L. KOESTNER
 P.E. & L.S. NJ LIC. # 27901/NY LIC. # 50865
KOESTNER ASSOCIATES
 PROFESSIONAL ENGINEERS & LAND SURVEYORS
 HACKENSACK, N.J. 07602
 April 26, 2022

since 1914

"A WRITTEN WAIVER AND DIRECTION NOT TO SET CORNER MARKERS HAS BEEN OBTAINED FROM THE ULTIMATE USER PURSUANT TO P.L. 2003, C.14(C45-8-36.3) AND N.J.A.C. 13:40-5.1(0)".



2384-C